



Question:

It seems as if ATHENA cannot find the USB key. The error message "Dongle wrong or missing" appears by starting the program.

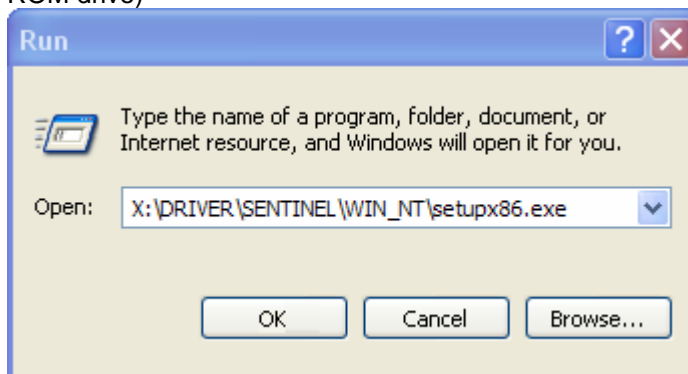
Answer:

If you want to use ATHENA with a USB key, you primarily have to install ATHENA before plugging in the dongle.

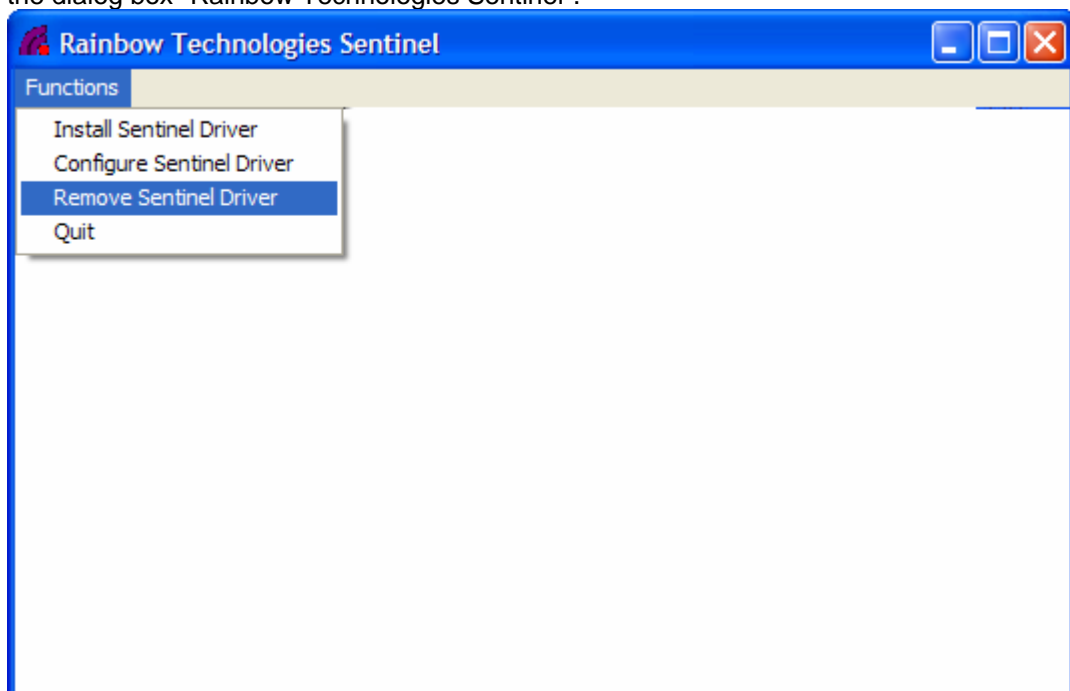
The USB Sentinel SuperPro key has to be removed before installing or reinstalling the driver. Otherwise the installation of the USB driver will fail.

If ATHENA cannot find the USB-key because of the reasons mentioned above you have to reinstall the driver and install it again afterwards. Act as follows:

1. Remove the key from the USB interface.
2. Insert the ATHENA CD into the CD-ROM drive.
3. Click on Start > Run and open the file X:\DRIVER\SENTINEL\WIN_NT\setupx86.exe (X=CD-ROM drive)

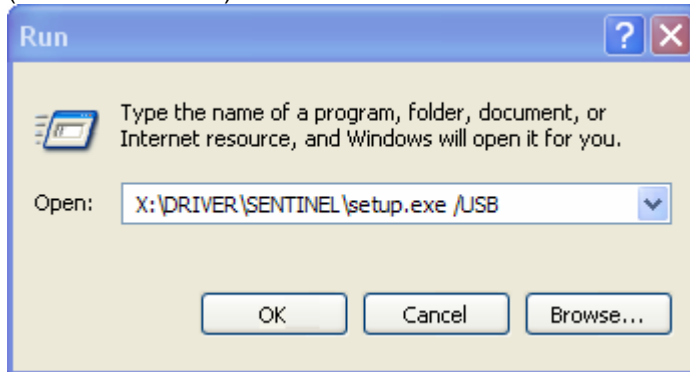


4. Chose in the menu of the dialog box "Rainbow Technologies Sentinel" Functions > Remove Sentinel Driver. In the following dialog box "Sentinel Remove" click the button OK and close the dialog box "Rainbow Technologies Sentinel".





5. Click on Start > Run and open the file "X:\DRIVER\SENTINEL\setup.exe" with the option /USB (X=CD-ROM drive).



6. Click on the button Continue installation in the dialog box "Hardware installation".
7. Plug the key in a free USB interface and start ATHENA.